



Capacitive sensors Series KXC-eXtreme

Housing 120 x 80 x 30 mm

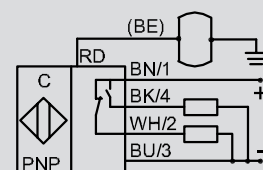
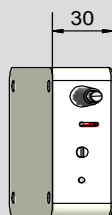
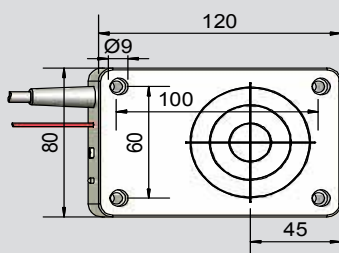
- Housing material: PBT
- Sensor and evaluation unit integrated in one housing
- Extreme large sensing distance



Technical data

Operating distance S_n	120 mm
Operating distance min / max adjustable	20...200 mm
Electrical version	4-wire DC
Output function	Antivalent
Type PNP	KXC-5-1-C65/30-P-A-120x80x30-PBT-Z02
Art.-No.	KX 0085
Operating voltage (U_B)	18...36 V DC
Output current max. (I_e)	2 x 0...250 mA
Voltage drop max. (U_o)	< 2.5 V
Permitted residual ripple max.	40 %
No-load current (I_o)	Typ. 50 mA
Frequency of operating cycles max.	4 Hz
Permitted ambient temperature	-25...+55 °C
LED-display	Green / yellow
Protective circuit	Built-in
Degree of protection IEC 60529	IP 65
Norm	EN 60947-5-2
Connection cable	2 m, PVC, 4 x 0.34 mm ²
Housing material	PBT
Active surface	PBT
Lid	PBT

All specifications are subject to change without notice. (28.06.2019)



Made in Germany