



## Capacitive Sensors

### Series 80 - PNP

#### Housing Triclamp

- Ideal for use in food applications
- Housing material: PTFE
- Sensing distance 1...40 mm adjustable
- With flange connector M 12 x 1

Certificate:



QuattroEtcProtect™

#### Technical data

Non-flush mountable

Operating distance $S_n$	25 mm
Operating distance min. / max. adjustable	1...40 mm
Electrical version	4-pin DC
Output function	Antivalent (NO + NC)

#### Type NPN

##### Art.-No.

Connection diagram No.

#### Type PNP

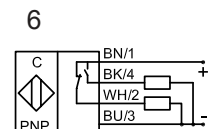
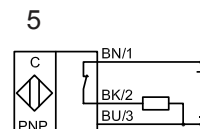
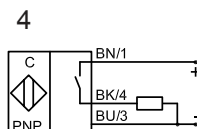
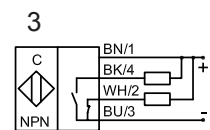
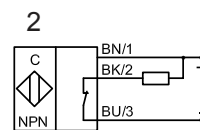
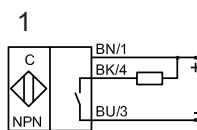
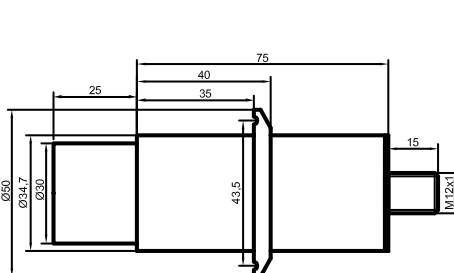
**KAS-80-35-35/100-A-PTFE-Y5**

##### Art.-No.

**KA 0394**

Connection diagram No.	6
Operating voltage ( $U_B$ )	10...35 V DC
Output current max. ( $I_o$ )	2 x 250 mA
Voltage drop max. ( $U_d$ )	≤ 2.0 V
Permitted residual ripple max.	10 %
No-load current ( $I_o$ )	Typ. 15 mA
Frequency of operating cycles max.	50 Hz
Permitted ambient temperature	-25...+70 °C
LED-display	Green / yellow
Protective circuit	Built-in
Degree of protection IEC 529	IP 67
Norm	EN 60947-5-2
Connection	Flange connector M 12 x 1
Housing material	PTFE (FDA 21 CFR 177.1550)
Active surface	PTFE (FDA 21 CFR 177.1550)
Lid	PA / PPO
Media optimized	Yes

All specifications are subject to change without notice. (19.03.2010)



**Made in Germany**