



## Capacitive Evaluation Unit

Series 70-250 - NPN  
Series 80-250 - PNP

Housing 75 x 47 x 30 mm  
• For capacitive sensors KS-250-M32(-Y)

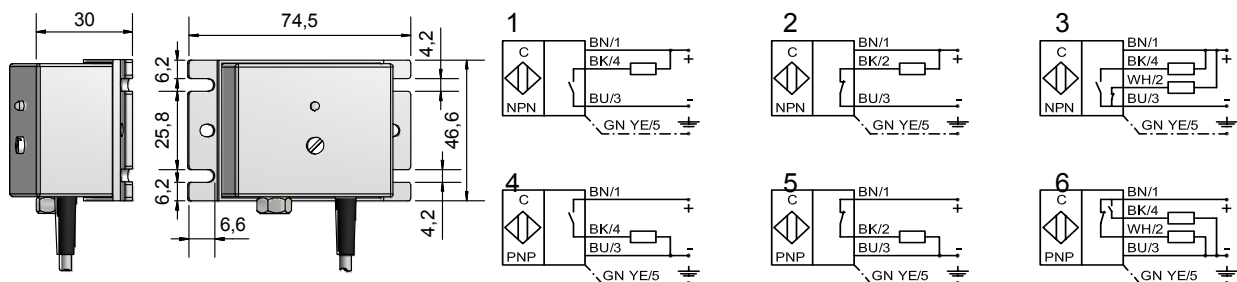
Certificate:



### Technical data

Electrical version	5-wire DC	5-wire DC
Output function	Antivalent	Antivalent
<b>Type NPN</b>	<b>KSA-70-250-A-M32-2m</b>	<b>KSA-70-250-A-M32-Y-2m</b>
<b>Art.-No.</b>	<b>AK 0003</b>	<b>AK 0007</b>
<b>Type PNP</b>	<b>KSA-70-250-A-M32-5m</b>	<b>KSA-70-250-A-M32-Y-5m</b>
<b>Art.-No.</b>	<b>AK 0004</b>	<b>AK 0008</b>
Connection diagram No.	3	3
<b>Type PNP</b>	<b>KSA-80-250-A-M32-2m</b>	<b>KSA-80-250-A-M32-Y-2m</b>
<b>Art.-No.</b>	<b>AK 0005</b>	<b>AK 0009</b>
<b>Type PNP</b>	<b>KSA-80-250-A-M32-5m</b>	<b>KSA-80-250-A-M32-Y-5m</b>
<b>Art.-No.</b>	<b>AK 0006</b>	<b>AK 0010</b>
Connection diagram No.	6	6
Operating voltage ( $U_B$ )	10...35 V DC	10...35 V DC
Output current max. ( $I_o$ )	2 x 250 mA	2 x 250 mA
Voltage drop max. ( $U_d$ )	< 2.5 V	< 2.5 V
Permitted residual ripple max.	10 %	10 %
No-load current ( $I_o$ )	Typ. 15 mA	Typ. 15 mA
Frequency of operating cycles max.	50 Hz	50 Hz
Permitted ambient temperature	-25...+70 °C	-25...+70 °C
LED-display	Green / yellow	Green / yellow
Protective circuit	Built-in	Built-in
Degree of protection IEC 60529	IP 65	IP 65
Norm	EN 60947-5-2	EN 60947-5-2
Connection cable	2 m PVC, 5 x 0.34 mm <sup>2</sup>	2 m PVC, 5 x 0.34 mm <sup>2</sup>
Housing material	PA	PA

All specifications are subject to change without notice. (06/2014)



**Made in Germany**