



Optoelectronic sensor

Series 10 - PNP

Rectangular housing 30 x 30 x 15 mm

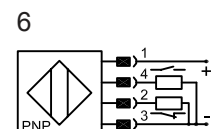
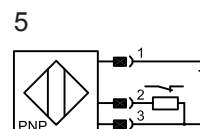
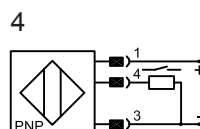
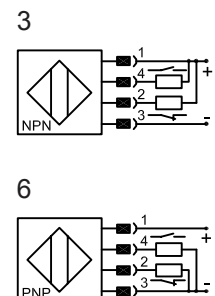
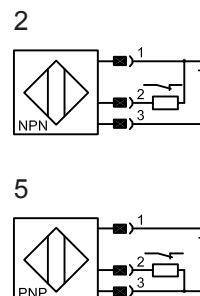
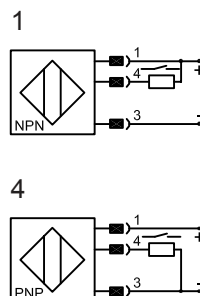
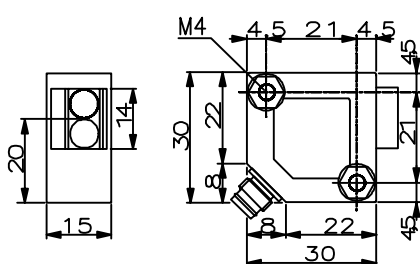
- Housing material: PBTP
- Sensing range 15...150 mm adjustable
- With plug-in connector M8 x 1
- Light sensor with background suppression



Certificate:

Technical data

| | |
|--|--|
| Sensing range [mm], min. / max. | 15 / 150 |
| Transmitting range [m] with triple reflector | - |
| Electrical version | 3-wire DC |
| Output function | NO |
| Typ PNP | IS-120-C30H-10-S-Y7 |
| Art.-No. | 559 422 |
| Connection diagram No. | 4 |
| Operating voltage (U_B) | 10...35 V DC |
| Output current max. (I_e) | 200 mA |
| Sender / Wavelength | LED red 660 nm |
| Extraneous light limit Halogen- / sunlight | 5.000 / 10.000 Lux |
| Voltage drop max. (U_d) | 2 V |
| Permitted residual ripple max. | 20 % |
| No-load current (I_0) | typ. 25 mA |
| Frequency of operating cycles max. | 500 Hz |
| Permitted ambient temperature | -25...+55°C |
| LED-display | function reserves sufficient: green switching state: yellow |
| Protective circuit | built-in |
| Degree of protection IEC 529 | IP 65 |
| Connection | plug-in connector M8 x 1 |
| Housing material | PBTP |
| Active surface | glass |
| Lid | - |



All specifications are subject to change without notice. (05/2006)