



Optoelectronic sensor

Series 10 - PNP

Rectangular housing 30 x 30 x 15 mm

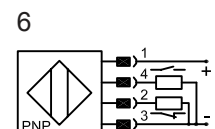
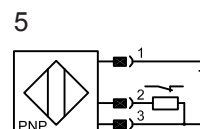
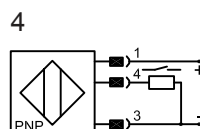
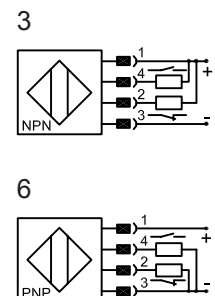
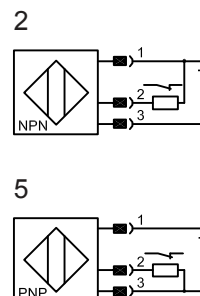
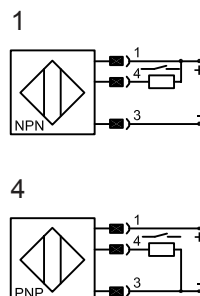
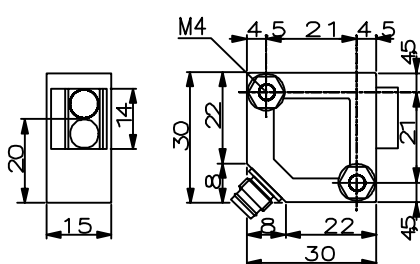
- Housing material: PBTP
- Sensing range 15...150 mm adjustable
- With plug-in connector M8 x 1
- Light sensor with background suppression



Certificate:

Technical data

Sensing range [mm], min. / max.	15 / 150
Transmitting range [m] with triple reflector	-
Electrical version	3-wire DC
Output function	NO
Typ PNP	IS-120-C30H-10-S-Y7
Art.-No.	559 422
Connection diagram No.	4
Operating voltage (U_B)	10...35 V DC
Output current max. (I_e)	200 mA
Sender / Wavelength	LED red 660 nm
Extraneous light limit Halogen- / sunlight	5.000 / 10.000 Lux
Voltage drop max. (U_d)	2 V
Permitted residual ripple max.	20 %
No-load current (I_0)	typ. 25 mA
Frequency of operating cycles max.	500 Hz
Permitted ambient temperature	-25...+55°C
LED-display	function reserves sufficient: green switching state: yellow
Protective circuit	built-in
Degree of protection IEC 529	IP 65
Connection	plug-in connector M8 x 1
Housing material	PBTP
Active surface	glass
Lid	-



All specifications are subject to change without notice. (05/2006)