



## Capacitive Evaluation Unit - KFA

Series **PER LEVEL**

NPN output

PNP output

- For connection of one capacitive level probe with 2 limit value switching points KFS-5-2-...-Y55 or for two capacitive level probes with 1 limit value switching point KFS-5-1-...-Y55
- Operating voltage 18...36 V DC
- With sensor break control
- With adjustable turn-off delay of 0,1...15 sec

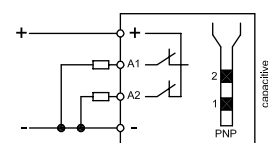
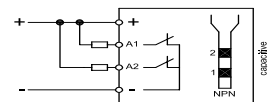
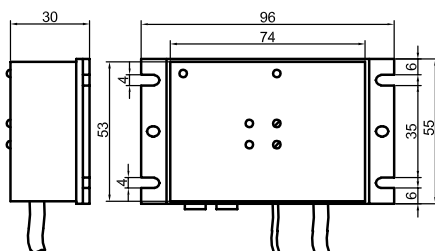
Certificate:



### Technical data

Electrical version	4-wire DC
Output	Normally closed
Type NPN	KFA-5-2-L-N-Ö-1FB-1TD-Y50
Art.-No.	AF 0083
Connection diagram No.	See below
Type PNP	KFA-5-2-L-P-Ö-1FB-1TD-Y50
Art.-No.	AF 0070
Connection diagram No.	See below
Operating voltage ( $U_b$ )	18...36 V DC
Output current max. ( $I_o$ )	2 x 250 mA
Voltage drop max. ( $U_d$ )	$\leq 2.5$ V
Permitted residual ripple max.	40%
No-load current ( $I_o$ )	Typ. 75 mA
Frequency of operating cycles max.	4 Hz
Permitted ambient temperature	-25...+55° C
LED-display	Red/green / static/flashing
Protective circuit	Built-in
Norm	EN 60947-5-2
Degree of protection IEC 60529	IP 54
Connection cable	2 m PVC, 4 x 0.14 mm <sup>2</sup>
Housing material	PA

All specifications are subject to change without notice. (12-11-2008)



**Made in Germany**